



# GMT MONTHLY MEMBERSHIP PROGRESS REPORT

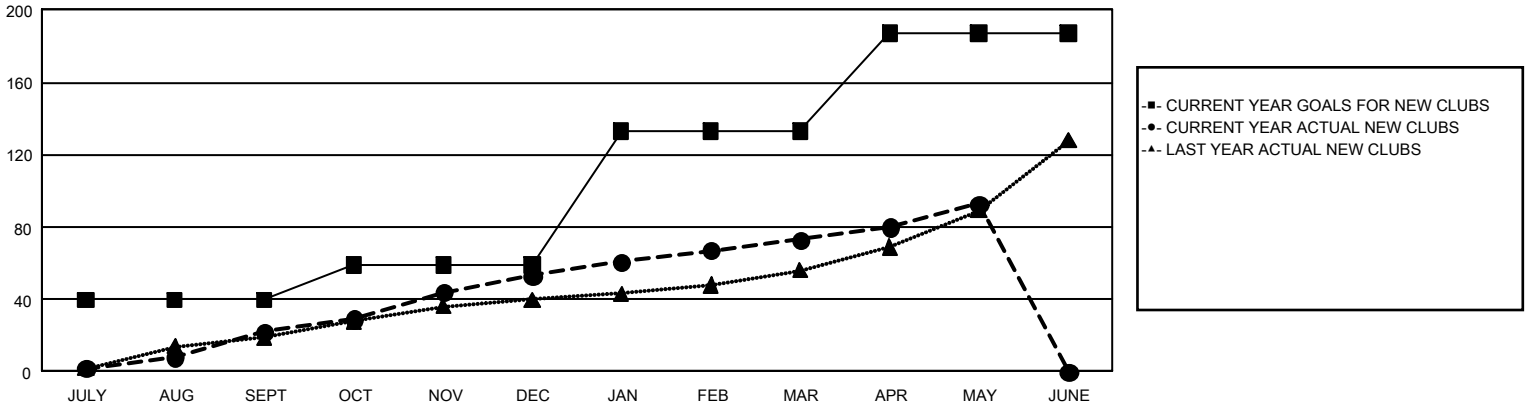
## GAT Constitutional Area 3

Results as of: 5/31/2024

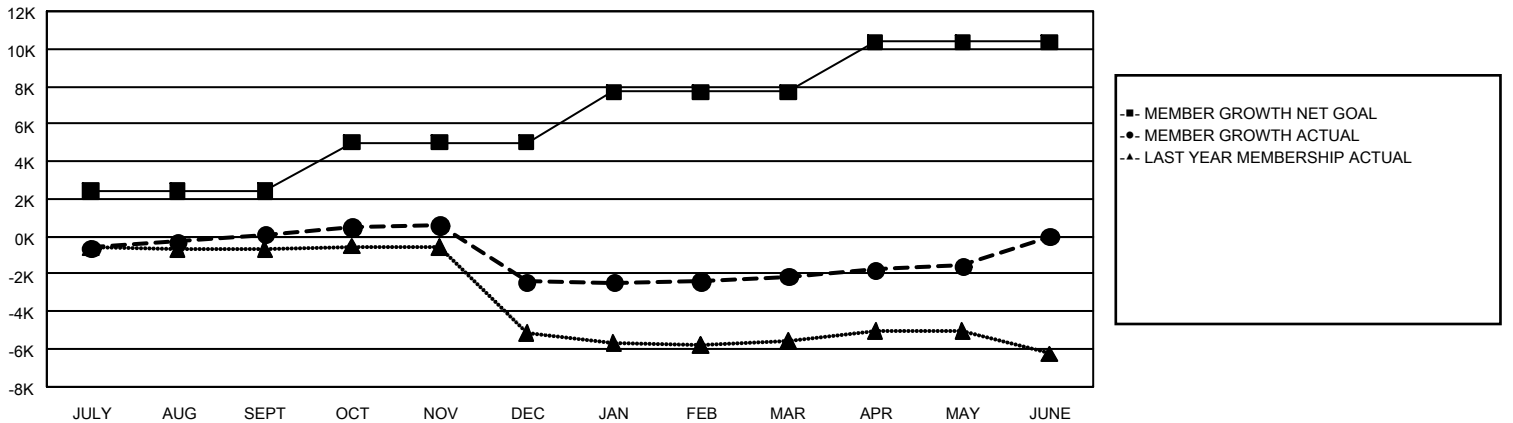
REPORT DOES NOT INCLUDE CLUBS IN UNDISTRICTED AREAS.

Clubs				Members			
RESULTS FOR 2023-2024				RESULTS FOR 2023-2024			
QUARTER	NEW CLUB GOAL	NEW CLUBS	DROPPED CLUBS	QUARTER	MEMBER GROWTH NET GOAL	MEMBER GROWTH ACTUAL	DROPPED MEMBERS ACTUAL (including transfers)
JULY/AUG/SEPT	40	22	38	JULY/AUG/SEPT	2,394	3,655	3,166
OCT/NOV/DEC	19	31	70	OCT/NOV/DEC	2,611	3,700	5,910
JAN/FEB/MAR	74	20	24	JAN/FEB/MAR	2,708	2,816	2,068
APR/MAY/JUNE	54	20	16	APR/MAY/JUNE	2,654	2,506	1,725

**GOALS AND ACTUAL NEW CLUBS CUMULATIVE**



**GOALS AND ACTUAL MEMBERS CUMULATIVE**



<b>DROPPED CLUBS: 147</b>	2,305 CLUBS OF 4,339 ADDED 1 OR MORE NEW MEMBERS	<b>GENDER DISTRIBUTION</b> MALE 47,495 (46.80%) FEMALE 53,948 (53.15%)
<b>DROPPED MEMBERS</b> DECEASED 687 CLUB CANCELLED 1,443 OTHER 10,719 <b>TOTAL 12,849</b>	<a href="#">CLICK HERE FOR CUMULATIVE MEMBERSHIP DATA</a>	TOTAL FAMILY UNIT MEMBERS 37,977  FAMILY MEMBERS PAYING HALF DUES 21,157